

**ONGOING
EVENTS**

LIVING HEALTHY LUNCH & LEARN
Education provided by ABIPA
WEDNESDAYS 12:00
Linwood Crump Shiloh Recreation Center
121 Shiloh Rd.

GARDEN DAY
Fun, Food & Fellowship
SATURDAYS WINTER HOURS 11 AM - 2 PM
85 Hampton St.

STORY TELLING DAY
Shiloh Garden 85 Hampton St.
MAY

ALL STAR BASKETBALL GAME
A.F.D vs Team Us
Hosted by Team Us
Linwood Crump Shiloh Recreation Center
121 Shiloh Rd.
MARCH 23rd 3 PM



COMMUNITY POP-UP SHOPS

SHILOH COMMUNITY POP-UP
Rock Hill Missionary Baptist Church
WEDNESDAYS 3 PM - 5 PM
Caribou Rd.

SHILOH COMMUNITY ASSOCIATION POP-UP
Open when tended on garden day.
SATURDAYS WINTER HOURS 11 AM - 2 PM
85 Hampton St.

NEWSLETTER SPONSORS



542 Hendersonville Road, Asheville, NC 28803

COMMUNITY CHURCHES

STORY TELLING DAY
Shiloh Garden 85 Hampton St.
MAY

STORY TELLING DAY
Shiloh Garden 85 Hampton St.
MAY

STORY TELLING DAY
Shiloh Garden 85 Hampton St.
MAY

STORY TELLING DAY
Shiloh Garden 85 Hampton St.
MAY

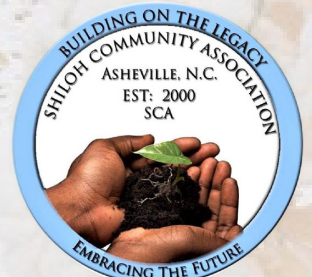
PBI INC
COMMERCIAL INTERIOR DESIGN
PBISASHEVILLE.COM | 828.277.7001

We are always looking to connect with local businesses. Contact Kristy Speciale for more information at kristyspeciale@gmail.com

SHILOH COMMUNITY NEWSLETTER

WINTER 2019

- From the Desk of our SCA President
- Community of Distinction Award
- Odyssey Clayworks Scholarship
- Team Us All Star Basketball Game
- SCA First Scholarship Recipient Graduates



Building on the legacy. Embracing the future.

From the Desk of Our Shiloh Community Association President



Sophie Dixon
with Instructor Tasha Ash

To all Shiloh Community Members and Friends, we closed 2018 with so many twists and turns. The association continues to be a part of the Isaac Coleman Grant along with three other community associations which forms the The E.W. Person Collaboration, made up of Shiloh, Burton Street, East End, and Project Light-en Up. Through this collaboration we have focused on projects of historical significance to their communities.

In Shiloh there will be four markers that will let all who visit our community remember the significance of the Shiloh Elementary School, a Rosenwald School. There will be a marker in the triangle of Shiloh Rd., Brooklyn Rd., and White Ave., a marker at the Brooklyn Fire Baptized Church on Brooklyn Rd.; as well as a marker at The Holmes Rest Home.

The association welcomes the growth of Shiloh and we feel the excitement of working shoulder to shoulder with new community members. It is the association's desire to meet the new tasks that will grow Shiloh in 2019. We have several committees that work hard to develop meaningful activities and events, those committees are the Events Committee, Communication, Fundraising, and the Shiloh Community Garden. We have monthly association meetings the first Monday of every month.

Please come and join the Shiloh Community Association and be a part of a hard working group.

March 4th @ 6:00 PM

Community of Distinction Award



Lydia George, Joan Martinez, JeWana Grier-McEachin, Norma Baynes, Sophie Dixon & Name Name

Award Recognition

Three communities are chosen for this award because of their overall ability of working together to assess, develop, and implement strategies to address community issues, as well as having numerous, diverse programs to benefit community members.

Our Community

Through grants and fundraising projects, the Shiloh Community Association in Buncombe County raised an impressive \$139,400 for their community. In collaboration with two other neighborhoods, the Shiloh Community Association led the process and was awarded an Isaac Coleman Community Innovation Grant which provided funds to create the Youth Stipend Program. The Youth Stipend Program creates an opportunity for youth, aged 10 to 17, to have work experience in the Shiloh Community Garden one day a week with the goal of building leadership skills, money management skills and a strong work ethic. A new fundraising project called the

Roadside Stand was built to provide entrepreneurial opportunities for residents. Located in the Community Garden, the stand sells products like T-shirts, stickers, mugs, as well as handmade crafts, to raise money for future projects and is staffed by participants of the Youth Stipend Program. Shiloh also partners with the City of Asheville Parks and Recreation and The Council on Aging to provide free healthy meals to senior citizens twice a week. A newly created Communications Committee was formed to focus on outreach in the neighborhood. This new committee informs residents about upcoming events, classes and important issues pertaining to the Shiloh community through a quarterly newsletter and au-

Hot Sauce Recipes Wanted

Our garden is planning for the planting season and we would love to see if we can plan for some good hot sauce concoctions for the summer season!

Send us a message or bring it to the next SCA meeting.

Visit our website at www.shilohnc.org/contact and fill out our contact form.

MONTHLY SHILOH COMMUNITY ASSOCIATION MEETING

JOIN US!

6:30 PM - 8:00 PM

1st Monday of the month for the SCA Meeting

*Linwood Crump Shiloh Center
121 Shiloh Rd.
Asheville, NC 28803*

With the exception of holiday's. When a holiday falls on the first Monday than the meeting will reside on the 2nd Monday of the month.

Odyssey Clayworks Scholarship



Did you know our youth have been given the opportunity to learn about and participate in a craft that is part of our Appalachian History?

They have been given this experience by way of a scholarship provided through the youth stipend program.

This is a 6 Week class instructed by leaders at the Odyssey Clayworks Studio in the River Arts District. It is so rewarding to see how the student's interest and knowledge in this art from grow each week.

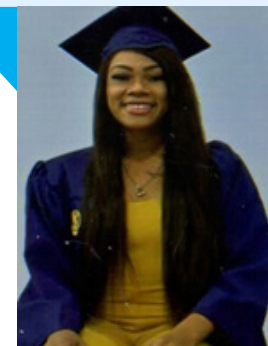
We Need Volunteer Drivers!

We are in need of drivers for our youth group, to and from **Odyssey Clayworks** in the River Arts District.

Can You Help? February 23rd March 9th & 23rd

Please contact Jillian Wolf for more information & to sign up!
bisoncrow@gmail.com

SCA First Scholarship Recipient Graduates



Zana Ruff, scholarship recipient for 2017-2018, received her Bachelor's Degree in Marketing from the University of North Carolina on December 7, 2018.

For details and an application form see www.shilohnc.org/scholarship

The Association is currently accepting applications for the 2019-2020 academic year.

The Association is also seeking donors to help fund the scholarship program. Any amount will be greatly appreciated.

Can we count on your donation? Send donations to

Shiloh Community Association
P.O. Box 5253
Asheville, NC 28813-5253

Make checks payable to the Shiloh Community Association and write "Scholarship Fund" on the memo line.

A.F.D vs Team Us

(Asheville Fire Department)

March 23rd 3:00 PM \$3.00
Tip Off Entry Fee

ALL STAR BASKETBALL GAME



LOCATION
Linwood Crump
Shiloh Center
121 Shiloh Rd.
Asheville, NC 28803

Christmas Celebration

The Annual Christmas Celebration was a wonderful combination of family, friends and food.



Brenda Mills the Asheville City Community Liaison, Johanna Johnson, Brenda Ellis, and Norma Baynes

OFFICERS OF THE SCA

Mrs. Sophie Dixon | PRESIDENT

Bobbette Mays | VICE PRESIDENT

Mrs. Georgia Allen | SECRETARY

JeWana Grier-McEachin | TREASURER

Bennie McIntosh | FINANCIAL SECRETARY

Alma Atkins | LIAISON

Mrs. Norma Baynes | ASSIST LIAISON

Pastor Spencer Hardaway | CHAPLIN

Mrs. Kristy Speciale | COMMUNICATIONS EDITOR